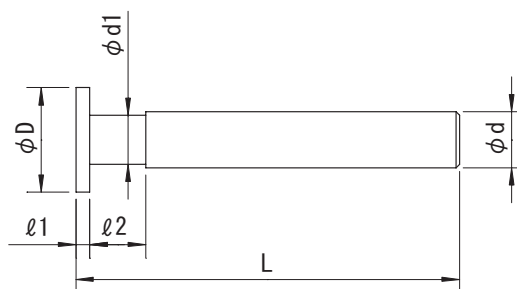


MSS-TiN

切削条件表
P271

柄付メタルソー Metal Saw With Straight Shank(TiN Coated)



公差 (Tolerance)	D: $\begin{matrix} +0.25 \\ 0 \end{matrix}$	l1: $\begin{matrix} 0 \\ -0.03 \end{matrix}$	d: h7
----------------	---	--	-------

右刃ストレート TiNコーティング 粉末ハイス
Straight Flute TiN Coating Powder Metallurgy

刃径 (ΦD)	刃厚 (ℓ1)	首径 (d1)	首長 (ℓ2)	全長 (L)	シャンク径 (Φd)	刃数 (N)
Dia.	Cut Width	Neck Dia.	Neck Length	Overall Length	Shank Dia.	Number of Flutes
16	0.8	7.5	14.2	75	8	16
	0.9	7.5	14.1	75	8	16
	1	7.5	14	75	8	16
	1.1	7.5	13.9	75	8	16
	1.2	7.5	13.8	75	8	16
	1.3	7.5	13.7	75	8	16
	1.4	7.5	13.6	75	8	16
	1.5	7.5	13.5	75	8	16
	1.6	7.5	13.4	75	8	16
	1.7	7.5	13.3	75	8	16
	1.8	7.5	13.2	75	8	16
	1.9	7.5	13.1	75	8	16
	2	7.5	13	75	8	16
	2.1	7.5	12.9	75	8	16
	2.2	7.5	12.8	75	8	16
	2.3	7.5	12.7	75	8	16
	2.4	7.5	12.6	75	8	16
	2.5	7.5	12.5	75	8	16
	2.6	7.5	12.4	75	8	16
	2.7	7.5	12.3	75	8	16
2.8	7.5	12.2	75	8	16	
2.9	7.5	12.1	75	8	16	
3	7.5	12	75	8	16	
18	0.8	7.5	14.2	75	8	18
	0.9	7.5	14.1	75	8	18
	1	7.5	14	75	8	18
	1.1	7.5	13.9	75	8	18
	1.2	7.5	13.8	75	8	18
	1.3	7.5	13.7	75	8	18
	1.4	7.5	13.6	75	8	18
	1.5	7.5	13.5	75	8	18
	1.6	7.5	13.4	75	8	18
	1.7	7.5	13.3	75	8	18
	1.8	7.5	13.2	75	8	18
	1.9	7.5	13.1	75	8	18
	2	7.5	13	75	8	18
	2.1	7.5	12.9	75	8	18
	2.2	7.5	12.8	75	8	18
	2.3	7.5	12.7	75	8	18
	2.4	7.5	12.6	75	8	18
	2.5	7.5	12.5	75	8	18
	2.6	7.5	12.4	75	8	18
	2.7	7.5	12.3	75	8	18
2.8	7.5	12.2	75	8	18	
2.9	7.5	12.1	75	8	18	
3	7.5	12	75	8	18	

刃径 (ΦD)	刃厚 (ℓ1)	首径 (d1)	首長 (ℓ2)	全長 (L)	シャンク径 (Φd)	刃数 (N)
Dia.	Cut Width	Neck Dia.	Neck Length	Overall Length	Shank Dia.	Number of Flutes
20	0.8	9.5	14.2	80	10	18
	0.9	9.5	14.1	80	10	18
	1	9.5	14	80	10	18
	1.1	9.5	13.9	80	10	18
	1.2	9.5	13.8	80	10	18
	1.3	9.5	13.7	80	10	18
	1.4	9.5	13.6	80	10	18
	1.5	9.5	13.5	80	10	18
	1.6	9.5	13.4	80	10	18
	1.7	9.5	13.3	80	10	18
	1.8	9.5	13.2	80	10	18
	1.9	9.5	13.1	80	10	18
	2	9.5	13	80	10	18
	2.1	9.5	12.9	80	10	18
	2.2	9.5	12.8	80	10	18
	2.3	9.5	12.7	80	10	18
	2.4	9.5	12.6	80	10	18
	2.5	9.5	12.5	80	10	18
	2.6	9.5	12.4	80	10	18
	2.7	9.5	12.3	80	10	18
2.8	9.5	12.2	80	10	18	
2.9	9.5	12.1	80	10	18	
3	9.5	12	80	10	18	
25	0.8	11.5	14.2	80	12	22
	0.9	11.5	14.1	80	12	22
	1	11.5	14	80	12	22
	1.1	11.5	13.9	80	12	22
	1.2	11.5	13.8	80	12	22
	1.3	11.5	13.7	80	12	22
	1.4	11.5	13.6	80	12	22
	1.5	11.5	13.5	80	12	22
	1.6	11.5	13.4	80	12	22
	1.7	11.5	13.3	80	12	22
	1.8	11.5	13.2	80	12	22
	1.9	11.5	13.1	80	12	22
	2	11.5	13	80	12	22
	2.1	11.5	12.9	80	12	22
	2.2	11.5	12.8	80	12	22
	2.3	11.5	12.7	80	12	22
	2.4	11.5	12.6	80	12	22
	2.5	11.5	12.5	80	12	22
	2.6	11.5	12.4	80	12	22
	2.7	11.5	12.3	80	12	22
2.8	11.5	12.2	80	12	22	
2.9	11.5	12.1	80	12	22	
3	11.5	12	80	12	22	