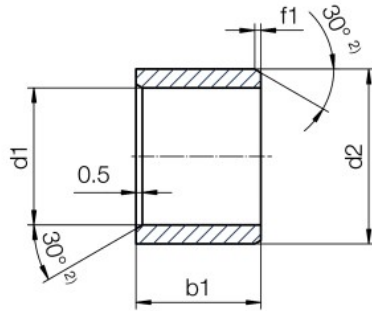


スリーブ型 (形状S)



2) 肉厚 < 1 mm、面取り = 20°

内径d1と面取りの関係

d1 [mm]:	Ø 1~6	Ø 6~12	Ø 12~30	Ø > 30
f [mm]:	0.3	0.5	0.8	1.2

寸法 [mm]

d1	d1公差 ³⁾	d2	b1 h13	製品番号
2.0		3.5	3.0	XSM-0203-03
3.0	+0.006	4.5	3.0	XSM-0304-03
3.0	+0.046	4.5	6.0	XSM-0304-06
4.0		5.5	4.0	XSM-0405-04
4.0		5.5	6.0	XSM-0405-06
4.0		5.0	9.0	XSM-0405-09
4.0		5.5	10.0	XSM-0405-10
5.0		7.0	3.5	XSM-0507-035
5.0	+0.010	7.0	5.0	XSM-0507-05
5.0	+0.058	7.0	8.0	XSM-0507-08
5.0		7.0	10.0	XSM-0507-10
6.0		8.0	6.0	XSM-0608-06
6.0		8.0	8.0	XSM-0608-08
6.0		8.0	10.0	XSM-0608-10
6.0		8.0	13.8	XSM-0608-13
7.0		9.0	10.0	XSM-0709-10
7.0		9.0	12.0	XSM-0709-12
8.0		10.0	6.0	XSM-0810-06
8.0		10.0	8.0	XSM-0810-08
8.0		10.0	10.0	XSM-0810-10
8.0		10.0	12.0	XSM-0810-12
8.0	+0.013	10.0	15.0	XSM-0810-15
10.0	+0.071	12.0	3.5	XSM-1012-035
10.0		12.0	6.0	XSM-1012-06
10.0		12.0	8.0	XSM-1012-08
10.0		12.0	10.0	XSM-1012-10
10.0		12.0	12.0	XSM-1012-12
10.0		12.0	15.0	XSM-1012-15

3) 圧入後。試験方法 ▶ p.57

製品番号の構成

形状 寸法 [mm]

X S M-0203-03

イグリデュール材質	形状S	mm	内径 d1	外径 d2	長さ b1
-----------	-----	----	-------	-------	-------

i ISO 3547-1による寸法公差

inch インチサイズはご相談下さい

d1	d1公差 ³⁾	d2	b1 h13	製品番号	
10.0	+0.013	+0.071	12.0	20.0	XSM-1012-20
12.0			14.0	3.5	XSM-1214-035
12.0			14.0	6.0	XSM-1214-06
12.0			14.0	8.0	XSM-1214-08
12.0			14.0	10.0	XSM-1214-10
12.0			14.0	12.0	XSM-1214-12
12.0			14.0	15.0	XSM-1214-15
12.0			14.0	20.0	XSM-1214-20
12.0			14.0	25.0	XSM-1214-25
13.0			15.0	10.0	XSM-1315-10
13.0			15.0	20.0	XSM-1315-20
14.0			16.0	12.0	XSM-1416-12
14.0			16.0	15.0	XSM-1416-15
14.0			16.0	20.0	XSM-1416-20
14.0	+0.016		16.0	25.0	XSM-1416-25
14.0	+0.086		16.0	25.0	XSM-1416-25
15.0			17.0	7.0	XSM-1517-07
15.0			17.0	10.0	XSM-1517-10
15.0			17.0	15.0	XSM-1517-15
15.0			17.0	20.0	XSM-1517-20
15.0			17.0	25.0	XSM-1517-25
16.0			18.0	10.0	XSM-1618-10
16.0			18.0	12.0	XSM-1618-12
16.0			18.0	15.0	XSM-1618-15
16.0			18.0	20.0	XSM-1618-20
16.0			18.0	25.0	XSM-1618-25
16.0			18.0	35.0	XSM-1618-35
17.0			19.0	20.0	XSM-1719-20
18.0			20.0	15.0	XSM-1820-15