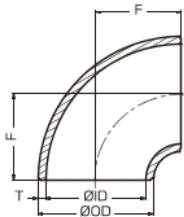
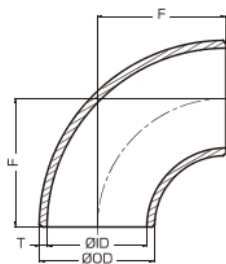
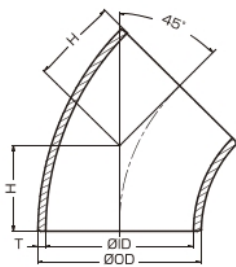


■ 配管用銅板製突合せ溶接式管継手

形状・寸法

45°エルボ (ロング) 45E (L)
 90°エルボ (ロング) 90E (L)
 90°エルボ (ショート) 90E (S)

■ エルボ



単位: mm

径の呼び		外径 OD	10S		20S		S40		中心から端面までの距離		
A	B		内径 ID	厚さ T	内径 ID	厚さ T	内径 ID	厚さ T	45E(L) H	90E(L) F	90E(S) F
15	1/2	21.7	17.5	2.1	16.7	2.5	16.1	2.8	15.8	38.1	-
20	3/4	27.2	23.0	2.1	22.2	2.5	21.4	2.9	15.8	38.1	-
25	1	34.0	28.4	2.8	28.0	3.0	27.2	3.4	15.8	38.1	25.4
32	1 1/4	42.7	37.1	2.8	36.7	3.0	35.5	3.6	19.7	47.6	31.8
40	1 1/2	48.6	43.0	2.8	42.6	3.0	41.2	3.7	23.7	57.2	38.1
50	2	60.5	54.9	2.8	53.5	3.5	52.7	3.9	31.6	76.2	50.8
65	2 1/2	76.3	70.3	3.0	69.3	3.5	65.9	5.2	39.5	95.3	63.5
80	3	89.1	83.1	3.0	81.1	4.0	78.1	5.5	47.3	114.3	76.2
90	3 1/2	101.6	95.6	3.0	93.6	4.0	90.2	5.7	55.3	133.4	88.9
100	4	114.3	108.3	3.0	106.3	4.0	102.3	6.0	63.1	152.4	101.6
125	5	139.8	133.0	3.4	129.8	5.0	126.6	6.6	78.9	190.5	127.0
150	6	165.2	158.4	3.4	155.2	5.0	151.0	7.1	94.7	228.6	152.4
200	8	216.3	208.3	4.0	203.3	6.5	199.9	8.2	126.3	304.8	203.2
250	10	267.4	259.4	4.0	254.4	6.5	248.8	9.3	157.8	381.0	254.0
300	12	318.5	309.5	4.5	305.5	6.5	297.9	10.3	189.4	457.2	304.8
350	14	355.6	345.6	5.0	339.6	8.0	333.4	11.1	220.9	533.4	355.6
400	16	406.4	396.4	5.0	390.4	8.0	381.0	12.7	252.5	609.6	406.4
450	18	457.2	447.2	5.0	441.2	8.0	428.6	14.3	284.1	685.8	457.2
500	20	508.0	497.0	5.5	489.0	9.5	477.8	15.1	315.6	762.0	508.0
550	22	558.8	547.8	5.5	539.8	9.5	527.0	15.9	347.2	838.2	558.8
600	24	609.6	596.6	6.5	590.6	9.5	574.6	17.5	378.7	914.4	609.6
650	26	660.4	644.4	8.0	635.0	12.7	622.6	18.9	410.3	990.6	660.4
700	28	711.2	695.2	8.0	685.8	12.7	-	-	441.9	1066.8	711.2
750	30	762.0	746.0	8.0	736.6	12.7	-	-	473.4	1143.0	762.0
800	32	812.8	796.8	8.0	787.4	12.7	-	-	505.0	1219.2	812.8
850	34	863.6	847.6	8.0	838.2	12.7	-	-	536.6	1295.4	863.6
900	36	914.4	898.4	8.0	889.0	12.7	-	-	568.1	1371.6	914.4
1000	40	1016.0	997.0	9.5	987.4	14.3	-	-	631.2	1524.0	1016.0

