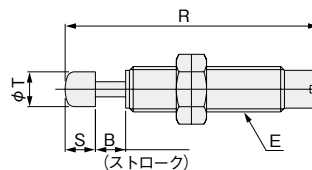
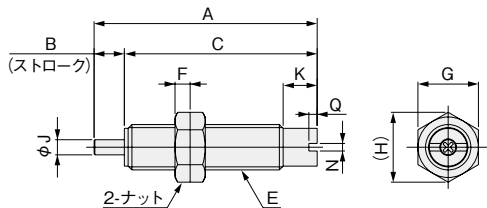


寸法図 (mm)

●ロッド先端キャップなし : KSHJ4×3, KSHJ6×4, KSHJ6×6

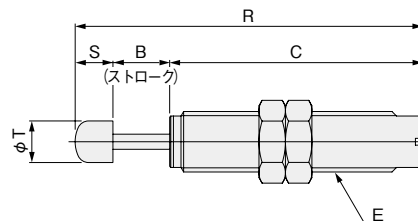
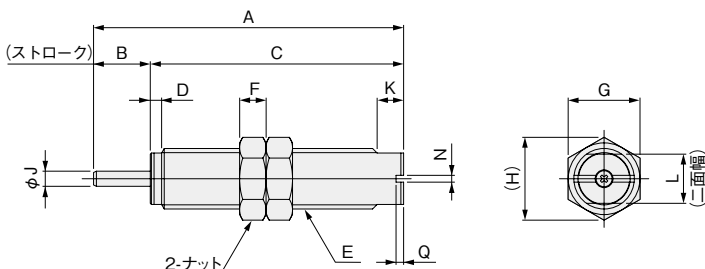
●ロッド先端キャップ付 : KSHJ4×3C, KSHJ6×4C, KSHJ6×6C



形式	記号	A	B	C	E	F	G	H	J	K	N	Q	R	S	T
KSHJ4×3(C)	-01,-02	25	3	22	M4×0.5	2	5.5	6.4	1.2	3	1	1.1	28.5	3.5	3.2
KSHJ6×4(C)	-01,-02	29.5	4	25.5	M6×0.75	2	8	9.2	2	4.5	1	1	33.5	4	4.6
KSHJ6×6(C)	-01,-02	35.5	6	29.5	M6×0.75	2	8	9.2	2	5.5	1	1	39.5	4	4.6

●ロッド先端キャップなし : KSHJ□×□-□

●ロッド先端キャップ付 : KSHJ□×□C-□



形式	記号	A	B	C	D	E	F	G	H	J	K	L	N	Q	R	S	T
KSHJ8×5(C)	-01	37	5	32	1.2	M8×0.75	2	10	11.5	2.5	3	7	1.3	1.5	42	5	6.5
KSHJ8×5(C)	-11	37	5	32	1.2	M8×1	3	10	11.5	2.5	3	7	1.3	1.5	42	5	6.5
KSHJ8×8(C)	-01,-02	46	8	38	1.2	M8×0.75	2	10	11.5	2.5	3	7	1.3	1.5	51	5	6.5
KSHJ8×8(C)	-11,-12	46	8	38	1.2	M8×1	3	10	11.5	2.5	3	7	1.3	1.5	51	5	6.5
KSHJ10×10(C)	-01,-02	60	10	50	2	M10×1	3	12	13.9	3	5	8.5	1.3	1.5	68	8	8
KSHJ10×15(C)	-01,-03	77	15	62	2.3	M10×1	3	12	13.9	3	5	8.5	1.3	1.5	85	8	8
KSHJ12×10(C)	-01,-02	66	10	56	2	M12×1	4	14	16.2	3	5	10.5	1.3	1.5	76	10	10
KSHJ14×12(C)	-01,-02	72	12	60	2	M14×1.5	5	17	19.6	4	5	12	1.3	1.5	82	10	11
KSHJ16×15(C)	-01,-02	82	15	67	3	M16×1.5	7	19	21.9	4	7	13	1.8	2	92	10	11
KSHJ18×16(C)	-01,-02	88	16	72	3	M18×1.5	8	21	24.2	5	7	15	1.8	2	103	15	15
KSHJ20×16(C)	-01,-02	93	16	77	3	M20×1.5	8	24	27.7	5	7	17	1.8	2	108	15	15
KSHJ22×25(C)	-01,-02	125	25	100	3	M22×1.5	9	27	31.2	6	10	19	1.8	2	143	18	18
KSHJ25×25(C)	-01	125	25	100	3	M25×1.5	10	30	34.6	6	10	22	1.8	2	143	18	18
KSHJ25×25(C)	-11,-12	125	25	100	3	M25×2	10	30	34.6	6	10	22	1.8	2	143	18	18

●ロッド先端キャップなし : KSHJ27×25-□

●ロッド先端キャップ付 : KSHJ27×25C-□

