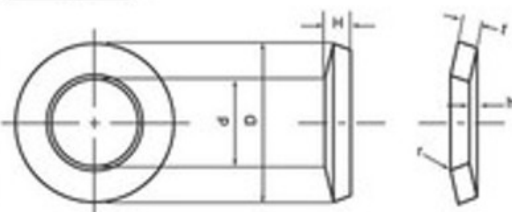


鉄 MDS皿ばね



W200M000

鉄



呼び	基本寸法						荷重				応力 MPa		
	d	D	t	h	H0	h1	P1	P2	P3	P4	σ または σ _{0.2}		
							δ=0.25h	δ=H	δ=0.75h	δ=h	δ=0.50h	δ=0.75h	δ=h
3-1	3.2	6.0	0.20	0.20	0.40	1.00	29.1	48.4	61.0	70.3	985	1366	1673
3-2	3.2	6.0	0.30	0.15	0.45	0.50	55.0	103.0	136.0	178.0	909	1200	1765
4-1	4.2	8.0	0.30	0.25	0.55	0.83	55.7	103.0	133.0	156.0	977	1334	1632
4-2	4.2	8.0	0.40	0.20	0.60	0.50	87.5	164.0	234.0	301.0	843	1227	1763
5-1	5.2	10.0	0.40	0.30	0.70	0.75	101.0	170.0	232.0	280.0	919	1313	1602
5-2	5.2	10.0	0.50	0.25	0.75	0.50	128.0	258.0	360.0	456.0	864	1247	1762
6-1	6.2	12.5	0.50	0.35	0.85	0.70	141.0	252.0	333.0	416.0	818	1114	1401
6-2	6.2	12.5	0.70	0.30	1.00	0.43	291.0	522.0	769.0	978.0	871	1430	1973
7-1	7.2	14.0	0.50	0.40	0.90	0.80	136.0	238.0	316.0	383.0	792	1109	1373
7-2	7.2	14.0	0.80	0.30	1.10	0.38	342.0	620.0	921.0	1180.0	832	1351	1849
8-1	8.2	16.0	0.60	0.45	1.05	0.75	188.0	345.0	459.0	560.0	811	1124	1387
8-2	8.2	16.0	0.90	0.35	1.25	0.39	415.0	797.0	1120.0	1470.0	852	1296	1844
9-1	9.2	18.0	0.70	0.50	1.20	0.71	266.0	459.0	630.0	770.0	798	1134	1397
9-2	9.2	18.0	1.00	0.40	1.40	0.40	496.0	952.0	1380.0	1800.0	820	1305	1839
10-1	10.2	20.0	0.80	0.55	1.35	0.89	337.0	605.0	812.0	1010.0	812	1121	1405
10-2	10.2	20.0	1.20	0.55	1.55	0.55	603.0	1120.0	1550.0	1980.0	942	1310	1882
11-1	11.2	22.5	0.80	0.65	1.45	0.81	326.0	582.0	766.0	922.0	788	1092	1346
11-2	11.2	22.5	1.20	0.50	1.70	0.42	692.0	1280.0	1870.0	2390.0	777	1258	1751
12-1	12.2	25.0	0.90	0.70	1.60	0.78	402.0	690.0	929.0	1120.0	736	1040	1279
12-2	12.2	25.0	1.60	0.55	2.15	0.34	1360.0	2640.0	3770.0	4960.0	1005	1540	2165
14-1	14.2	28.0	1.00	0.80	1.80	0.80	507.0	886.0	1180.0	1430.0	781	1094	1354
14-2	14.2	28.0	1.60	0.65	2.25	0.41	1300.0	2560.0	3680.0	4740.0	892	1404	1970
16-1	16.3	31.5	1.20	0.90	2.10	0.75	771.0	1340.0	1810.0	2210.0	829	1171	1446
16-2	16.3	31.5	1.80	0.70	2.50	0.39	1640.0	3070.0	4490.0	5800.0	852	1368	1904
18-1	18.3	35.5	1.20	1.00	2.20	0.83	698.0	1210.0	1590.0	1920.0	753	1053	1301
18-2	18.3	35.5	2.00	0.80	2.80	0.40	1960.0	3770.0	5460.0	7100.0	843	1342	1892
20-1	20.4	40.0	1.60	1.15	2.75	0.72	1370.0	2440.0	3290.0	4070.0	856	1192	1487
20-2	20.4	40.0	2.00	1.10	3.10	0.55	2320.0	4230.0	6000.0	7600.0	926	1324	1882
22-1	22.4	45.0	1.80	1.30	3.10	0.72	1730.0	3030.0	4130.0	5080.0	836	1179	1461
22-2	22.4	45.0	2.50	1.00	3.50	0.40	2890.0	5540.0	8040.0	10500.0	821	1306	1840
25-1	25.4	50.0	2.00	1.40	3.40	0.70	2090.0	3740.0	5110.0	6330.0	816	1149	1432
25-2	25.4	50.0	3.0	1.10	4.10	0.37	4800.0	9110.0	1340.0	17300.0	904	1438	2002
28-1	28.5	56.0	2.00	1.60	3.60	0.80	2030.0	3550.0	4730.0	5730.0	784	1098	1359
28-2	28.5	56.0	3.00	1.30	4.30	0.43	4610.0	8660.0	12500.0	16200.0	801	1291	1819
30-1	31.0	63.0	2.50	1.75	4.25	0.70	3160.0	5660.0	7680.0	9530.0	783	1095	1380
30-2	31.0	63.0	3.50	1.40	4.90	0.40	5920.0	11400.0	16500.0	21500.0	822	1307	1842
35-1	36.0	71.0	2.50	2.00	4.50	0.80	3080.0	5380.0	7160.0	8670.0	759	1063	1316
35-2	36.0	71.0	4.00	1.60	5.60	0.40	8130.0	15600.0	22600.0	29400.0	844	1342	1891
40-1	41.0	80.0	3.00	2.30	5.30	0.77	4790.0	8380.0	11300.0	13700.0	820	1153	1428
40-2	41.0	80.0	5.00	1.70	6.70	0.34	13300.0	25600.0	37500.0	49000.0	930	1470	2043
45-1	46.0	90.0	3.50	2.50	6.00	0.71	6290.0	11200.0	15200.0	18700.0	798	1125	1397
45-2	46.0	90.0	5.00	2.00	7.00	0.40	12400.0	23800.0	34500.0	44900.0	820	1305	1839
50-1	51.0	100.0	3.50	2.80	6.30	0.80	5980.0	10500.0	13900.0	16900.0	755	1057	1308
50-2	51.0	100.0	6.00	2.20	8.20	0.37	18900.0	36500.0	53300.0	69500.0	904	1428	2002
56-1	57.0	112.0	4.00	3.20	7.20	0.87	8140.0	14200.0	18900.0	22900.0	784	1098	1359
56-2	57.0	112.0	6.00	2.50	8.50	0.42	17500.0	33100.0	48100.0	62200.0	782	1253	1765
60-1	61.0	125.0	5.00	4.00	9.00	0.80	15600.0	27300.0	36300.0	44100.0	946	1324	1638
60-2	61.0	125.0	6.00	3.60	9.60	0.60	21400.0	39400.0	55000.0	69400.0	919	1301	1843
63-1	64.0	125.0	5.00	3.50	8.50	0.70	13200.0	23500.0	32100.0	39700.0	823	1160	1443
63-2	64.0	125.0	8.00	2.60	10.60	0.33	33700.0	65400.0	96400.0	126000.0	945	1482	2064
65-1	66.0	125.0	5.50	3.40	8.90	0.82	16500.0	30200.0	42100.0	52900.0	868	1229	1573
65-2	66.0	125.0	8.00	2.50	10.50	0.31	33200.0	64300.0	94700.0	124000.0	919	1444	2000
70-1	71.0	125.0	6.00	3.30	9.30	0.55	21600.0	39900.0	56400.0	71600.0	964	1373	1755
70-2	71.0	125.0	8.00	2.40	10.40	0.30	33700.0	65900.0	96900.0	127000.0	902	1412	1959
75-1	77.0	150.0	6.00	4.00	10.00	0.87	17800.0	31900.0	43800.0	54600.0	772	1089	1360
75-2	77.0	150.0	9.00	3.20	12.20	0.36	41300.0	79800.0	117000.0	150000.0	885	1396	1953
80-1	82.0	160.0	6.00	4.50	10.50	0.75	18500.0	32500.0	43900.0	53700.0	796	1118	1387
80-2	82.0	160.0	10.00	3.50	13.50	0.35	54800.0	105000.0	154000.0	202000.0	950	1500	2092
90-1	92.0	180.0	6.00	5.10	11.10	0.85	17800.0	30300.0	39800.0	47700.0	747	1044	1288
90-2	92.0	180.0	10.00	4.00	14.00	0.40	49800.0	95200.0	138000.0	180000.0	820	1305	1839
100-1	102.0	200.0	8.00	5.60	13.60	0.70	33500.0	60100.0	81900.0	101000.0	819	1154	1437
100-2	102.0	200.0	12.00	4.20	16.20	0.35	71700.0	138000.0	203000.0	266000.0	875	1379	1928
110-1	112.0	225.0	8.00	6.50	14.50	0.81	32700.0	56700.0	78300.0	91000.0	778	1089	1346
110-2	112.0	225.0	12.00	5.00	17.00	0.42	87700.0	129000.0	187000.0	243000.0	777	1239	1751
120-1	122.0	230.0	9.00	6.00	15.00	0.87	38800.0	70100.0	96500.0	120000.0	764	1078	1347
120-2	122.0	230.0	13.00	5.00	18.00	0.38	85600.0	164000.0	239000.0	311000.0	828	1315	1849
125-1	127.0	250.0	10.00	7.00	17.00	0.70	52200.0	93600.0	128000.0	158000.0	816	1149	1432
125-2	127.0	250.0	12.00	7.30	19.00	0.61	89900.0	164000.0	229000.0	289000.0	972	1377	1853