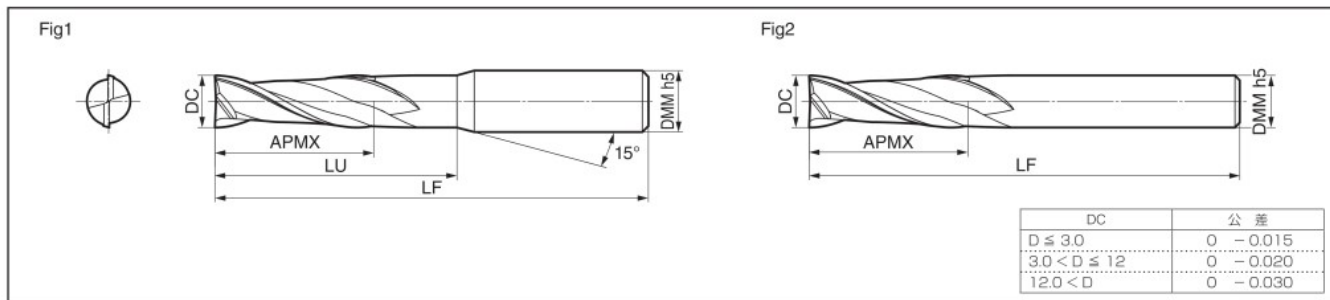


# GSX 20000S-3D型

一般鋼 炭素鋼 合金鋼 フルハード鋼 調質鋼 高硬度鋼 45~55 HRC 高硬度鋼 55~60 HRC ステンレス鋼 Ti合金 耐熱合金 鋳鉄



## ■本体

型番	在庫	寸法(mm)					Fig	標準価格(円)
		刃径 DC	切刃長 APMX	首下長 LU	全長 LF	シャンク径 DMM		
GSX 20050S-3D	●	0.5	1.5	1.9	40	4	1	2,110
20100S-3D	●	1.0	3.0	4.0	40	4	1	1,840
20150S-3D	●	1.5	4.5	5.5	40	4	1	1,840
20200S-3D	●	2.0	6.0	7.0	40	4	1	1,840
20250S-3D	●	2.5	7.5	8.5	40	4	1	1,840
GSX 20260S-3D	●	2.6	8.0	9.5	50	4	1	4,070
20270S-3D	●	2.7	8.5	10.0	50	4	1	4,070
20280S-3D	●	2.8	9.0	10.5	50	4	1	4,070
20290S-3D	●	2.9	9.0	10.5	50	4	1	4,070
20300S-3D	●	3.0	9.0	10.5	50	6	1	2,330
GSX 20350S-3D	●	3.5	12.0	13.5	50	6	1	4,110
20400S-3D	●	4.0	12.0	13.5	50	6	1	2,670
20450S-3D	●	4.5	15.0	16.5	50	6	1	4,850
20500S-3D	●	5.0	15.0	17.0	50	6	1	2,870
20550S-3D	●	5.5	18.0	20.0	50	6	1	4,850
GSX 20600S-3D	●	6.0	18.0	—	50	6	2	3,070
20650S-3D	●	6.5	20.0	22.0	70	8	1	4,950
20700S-3D	●	7.0	21.0	23.0	70	8	1	6,910
20750S-3D	●	7.5	23.0	25.0	70	8	1	5,280
20800S-3D	●	8.0	24.0	—	70	8	2	5,050
GSX 20850S-3D	●	8.5	26.0	28.0	75	10	1	8,250
20900S-3D	●	9.0	27.0	29.0	75	10	1	9,210
20950S-3D	●	9.5	29.0	31.0	75	10	1	8,250
21000S-3D	●	10.0	30.0	—	90	10	2	6,140
21050S-3D	●	10.5	32.0	34.5	90	12	1	12,100
GSX 21100S-3D	●	11.0	33.0	35.5	90	12	1	12,100
21150S-3D	●	11.5	35.0	37.5	90	12	1	12,100
21200S-3D	●	12.0	36.0	—	90	12	2	8,710
21300S-3D	●	13.0	39.0	42.5	100	16	1	20,900
21400S-3D	●	14.0	42.0	45.5	110	16	1	23,100
GSX 21500S-3D	●	15.0	45.0	48.5	110	16	1	24,500
21600S-3D	●	16.0	48.0	—	110	16	2	24,900
21700S-3D	●	17.0	51.0	55.5	110	20	1	36,300
21800S-3D	●	18.0	54.0	58.5	120	20	1	38,500
21900S-3D	●	19.0	57.0	61.5	120	20	1	40,700
GSX 22000S-3D	●	20.0	60.0	—	120	20	2	42,000
22400S-3D	●	24.0	72.0	77.0	130	25	1	63,300
22500S-3D	●	25.0	75.0	—	130	25	2	68,200

材種 ACF20

## ■ 型番の呼び方 (GSXMILL シリーズのみ)

# GSX 2 0050 S - 3D

① 形式記号    ② 刃数    ③ 刃径    ④ 刃先部形状    ⑤ 刃長  
 (S: シャープコーナー    C: ギャッシュランド付)

●印: 標準在庫品 (拡充品)