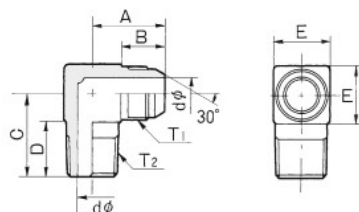


エルボータイプアダプター

● Material : Plated steel, Stainless Steel
● 材質 : SS(三価クロメートメッキ)・SUS304

SR-33 (同径)

材質SUS304はSSR-33



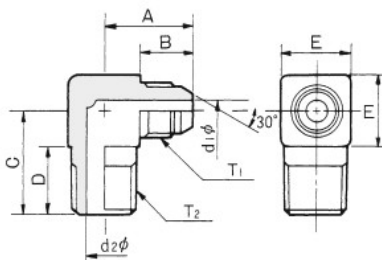
接続口金具 : SR-04

*印はSSのみ

呼び径	ねじT ₁	ねじT ₂	Amm	Bmm	Cmm	Dmm	dφmm	Emm
3	G 1/8	R 1/8	20.0	13.0	21.0	14.0	4.0	14
6	G 1/4	R 1/4	24.5	16.0	25.5	17.0	5.5	17
9	G 3/8	R 3/8	27.5	17.5	30.0	20.0	7.0	19
12	G 1/2	R 1/2	32.0	20.0	36.0	24.0	10.0	24
19	G 3/4	R 3/4	36.5	21.5	43.0	28.0	16.0	30
25	G 1	R 1	40.5	22.5	50.0	32.0	22.0	36
32	G 1 1/4	R 1 1/4	49.5	27.0	57.5	35.0	28.0	45
38	G 1 1/2	R 1 1/2	52.0	27.0	63.0	38.0	34.0	50
50	G 2	R 2	61.5	30.0	73.5	42.0	45.0	63
* 65	G 2 1/2	R 2 1/2	83.0	43.0	88.0	48.0	56.0	80
* 75	G 3	R 3	90.5	43.0	101.5	54.0	68.0	95

SR-33 (異径)

材質SUS304はSSR-33



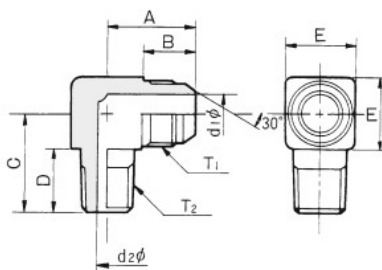
接続口金具 : SR-04

*印のSUSは受注生産

呼び径	ねじT ₁	ねじT ₂	Amm	Bmm	Cmm	Dmm	d ₁ φmm	d ₂ φmm	Emm
3×6	G 1/8	R 1/4	20.0	13.0	23.0	15	4.0	5.5	14
6×9	G 1/4	R 3/8	26.0	16.0	30.0	20	5.5	7.0	19
9×12	G 3/8	R 1/2	29.5	17.5	36.0	24	7.0	10.0	24
12×19	G 1/2	R 3/4	35.0	20.0	43.0	28	10.0	16.0	30
19×25	G 3/4	R 1	39.5	21.5	50.0	32	16.0	22.0	36
* 25×32	G 1	R 1 1/4	45.0	22.5	57.5	35	22.0	28.0	45
* 32×38	G 1 1/4	R 1 1/2	52.0	27.0	63.0	38	28.0	34.0	50
* 38×50	G 1 1/2	R 2	58.5	27.0	73.5	42	34.0	45.0	63

SR-33 (異径)

材質SUS304はSSR-33

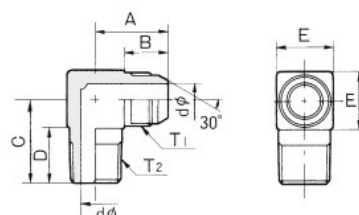


接続口金具 : SR-04

*印のSUSは受注生産

呼び径	ねじT ₁	ねじT ₂	Amm	Bmm	Cmm	Dmm	d ₁ φmm	d ₂ φmm	Emm
6×3	G 1/4	R 1/8	24.0	16.0	22.0	14	5.5	4.0	17
9×6	G 3/8	R 1/4	27.5	17.5	27.0	17	7.0	5.5	19
12×9	G 1/2	R 3/8	32.0	20.0	32.0	20	10.0	7.0	24
19×12	G 3/4	R 1/2	36.5	21.5	39.0	24	16.0	10.0	30
25×19	G 1	R 3/4	40.5	22.5	46.0	28	22.0	16.0	36
* 32×25	G 1 1/4	R 1	49.5	27.0	57.5	32	28.0	22.0	45
* 38×32	G 1 1/2	R 1 1/4	52.0	27.0	63.0	35	34.0	28.0	50
* 50×38	G 2	R 1 1/2	61.5	30.0	73.5	38	45.0	34.0	63

SR-33GN (アメリカ管用ねじ)



接続口金具 : SR-04

*印及びSUSは受注生産

呼び径	ねじT ₁	ねじT ₂	Amm	Bmm	Cmm	Dmm	dφmm	Emm
3	G 1/8	NPT 1/8	20.0	13.0	21.0	14.0	4.0	14
6	G 1/4	NPT 1/4	24.0	16.0	25.0	17.0	5.5	17
9	G 3/8	NPT 3/8	27.5	17.5	30.0	20.0	7.0	19
12	G 1/2	NPT 1/2	32.0	20.0	36.0	24.0	10.0	24
19	G 3/4	NPT 3/4	36.5	21.5	43.0	28.0	16.0	30
25	G 1	NPT 1	40.5	22.5	50.0	32.0	22.0	36
* 32	G 1 1/4	NPT 1 1/4	49.5	27.0	57.5	35.0	28.0	45
* 38	G 1 1/2	NPT 1 1/2	52.0	27.0	63.0	38.0	34.0	50
* 50	G 2	NPT 2	61.5	30.0	73.5	42.0	45.0	63