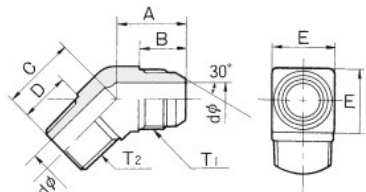


## エルボータイプアダプター

● Material : Plated steel, Stainless Steel  
● 材質 : SS(三価クロメートメッキ)・SUS304

### SR-35 (同径)

材質SUS304はSSR-35



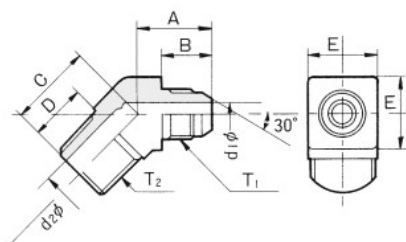
接続口金具 : SR-04

\*印はSSのみ

呼び径	ねじT <sub>1</sub>	ねじT <sub>2</sub>	Amm	Bmm	Cmm	Dmm	d <sub>1</sub> φmm	d <sub>2</sub> φmm	Emm
* 3	G 1/8	R 1/8	19.0	13.0	18	12	4.0	14	
6	G 1/4	R 1/4	22.0	16.0	19	13	5.5	17	
9	G 3/8	R 3/8	24.5	17.5	22	15	7.0	19	
12	G 1/2	R 1/2	28.0	20.0	27	18	10.0	24	
19	G 3/4	R 3/4	31.5	21.5	30	20	16.0	30	
25	G 1	R 1	34.0	22.5	34	22	22.0	36	
32	G 1 1/4	R 1 1/4	41.0	27.0	40	25	28.0	45	
38	G 1 1/2	R 1 1/2	43.0	27.0	41	25	34.0	50	
50	G 2	R 2	50.0	30.0	50	30	45.0	63	
* 65	G 2 1/2	R 2 1/2	73.0	43.0	78	48	56.0	80	
* 75	G 3	R 3	80.0	43.0	90	54	68.0	95	

### SR-35 (異径)

材質SUS304はSSR-35



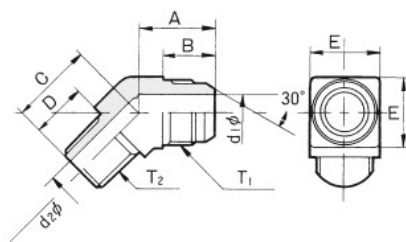
接続口金具 : SR-04

SUSは受注生産

呼び径	ねじT <sub>1</sub>	ねじT <sub>2</sub>	Amm	Bmm	Cmm	Dmm	d <sub>1</sub> φmm	d <sub>2</sub> φmm	Emm
3×6	G 1/8	R 1/4	19.0	13.0	19	13	4.0	5.5	14
6×9	G 1/4	R 3/8	23.0	16.0	22	15	5.5	7.0	19
9×12	G 3/8	R 1/2	26.5	17.5	27	18	7.0	10.0	24
12×19	G 1/2	R 3/4	30.0	20.0	30	20	10.0	16.0	30
19×25	G 3/4	R 1	33.0	21.5	34	22	16.0	22.0	36
25×32	G 1	R 1 1/4	41.0	22.5	40	25	22.0	28.0	45
32×38	G 1 1/4	R 1 1/2	43.0	27.0	41	25	28.0	34.0	50
38×50	G 1 1/2	R 2	50.0	27.0	50	30	34.0	45.0	63

### SR-35 (異径)

材質SUS304はSSR-35

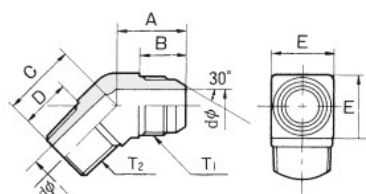


接続口金具 : SR-04

SUSは受注生産

呼び径	ねじT <sub>1</sub>	ねじT <sub>2</sub>	Amm	Bmm	Cmm	Dmm	d <sub>1</sub> φmm	d <sub>2</sub> φmm	Emm
6×3	G 1/4	R 1/8	22.0	16.0	18	12	5.5	4.0	17
9×6	G 3/8	R 1/4	24.5	17.5	20	13	7.0	5.5	19
12×9	G 1/2	R 3/8	28.0	20.0	24	15	10.0	7.0	24
19×12	G 3/4	R 1/2	31.5	21.5	28	18	16.0	10.0	30
25×19	G 1	R 3/4	34.0	22.5	32	20	22.0	16.0	36
32×25	G 1 1/4	R 1	41.0	27.0	40	22	28.0	22.0	45
38×32	G 1 1/2	R 1 1/4	43.0	27.0	41	25	34.0	28.0	50
50×38	G 2	R 1 1/2	50.0	30.0	50	25	45.0	34.0	63

### SR-35MR (メートルねじ)



接続口金具 : SR-04(Mねじ)

SUSは受注生産

呼び径	ねじT <sub>1</sub>	ねじT <sub>2</sub>	Amm	Bmm	Cmm	Dmm	dφmm	Emm
14×6	M14-P1.5	R 1/4	22.5	16.5	19	13	5.5	17
18×9	M18-P1.5	R 3/8	25.0	18.0	22	15	7.0	19
22×9	M22-P1.5	R 3/8	28.0	21.0	22	15	M10・R7	24
22×12	M22-P1.5	R 1/2	29.0	21.0	27	18	10.0	24
24×12	M24-P1.5	R 1/2	31.0	23.0	27	18	10.0	24
24×19	M24-P1.5	R 3/4	33.0	23.0	30	20	16.0	30
30×19	M30-P1.5	R 3/4	39.5	28.0	30	20	16.0	36
33×25	M33-P1.5	R 1	41.5	30.0	34	22	20.0	36